



**Fastener  
Catalogue**



**Dedication**

**Integrity**

**Craftsmanship  
Spirit**

# About us

**TM Fastener**, an extension to Jiamao Precision Factory which was founded in 2007, and we export products to more than 30 countries, including Mexico, Colombia, the United States, Brazil, Ecuador, Peru, Chile, South America, Africa, Southeast Asia, and others. Our products include various types of screws, bolts, washers, threaded rods, etc., with a monthly production capacity of approximately 1,500 tons. We carry out inspection testing before packing each batch of products, as we ensure every patch of products is delivered to you with quality (See Production Chart).



## Certification

Certificates demonstrate our ability to consistently provide products that meet customer requirements and comply with applicable regulations. We have implemented a rigorous quality management system that ensures every screw we produce meets the highest standards of quality and reliability.

We believe that certifications are not simply just a box to be checked, but a reflection of our values and commitment to excellence. We are constantly striving to improve our processes and products, and our certifications serve as a testament to our ongoing efforts.

### ISO 9001



### CBAM



Carbon Border  
Adjustment Mechanism

### CCPIT



Proud Member of the China  
Council for the Promotion of  
International Trade

## Standards/Norms



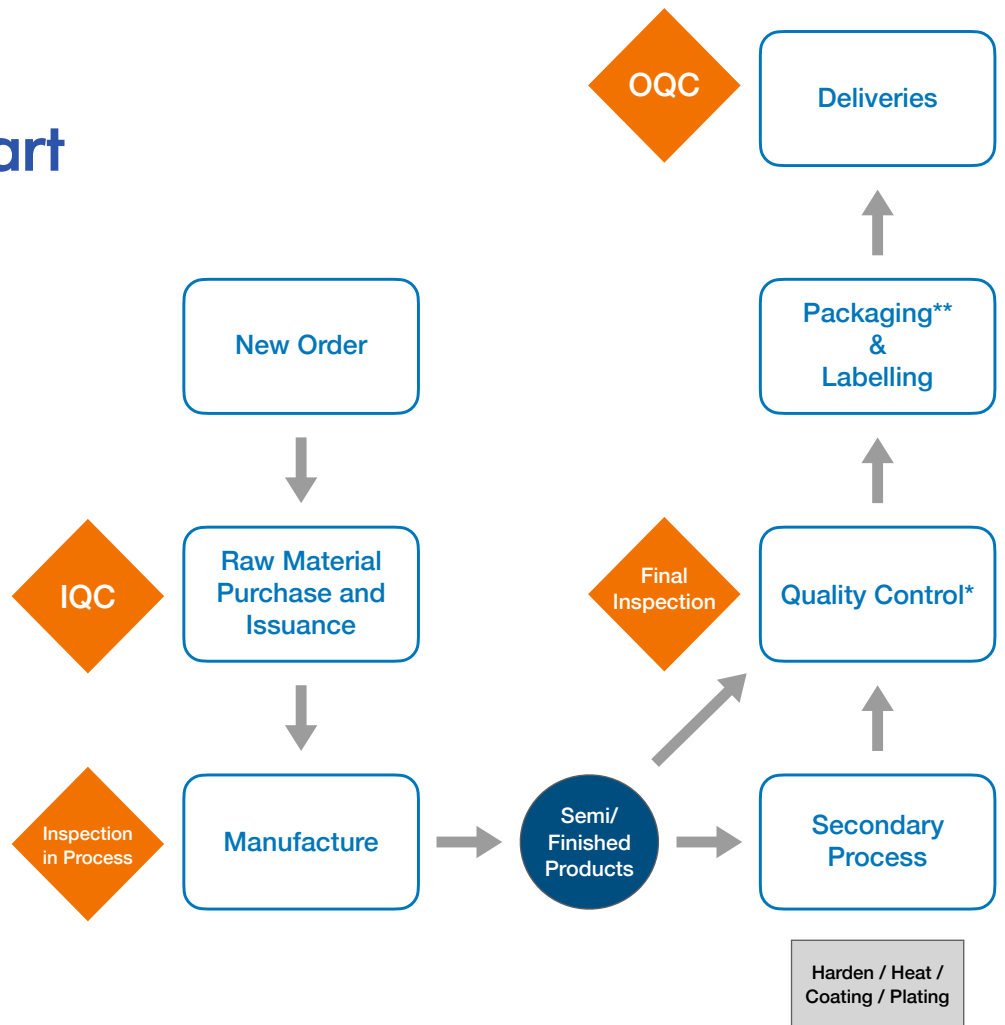
We also manufacture Non  
Standard Parts. According  
to your drawing.

# Production Chart

## Quality Control\*

We carry out Quality Assurance Testings whenever it's required and necessary.

1. Reconfirm Hardness
2. Tensile Strength
3. Torque Testings
4. Dimension Testings
5. RoHS
6. Salt Spray (Corrosion)



## Packaging\*\*

Our company is dedicated to providing high-quality packaging solutions, committed to delivering exceptional product protection and aesthetically gratifying design for our esteemed clientele. Our packaging solutions cater to a plethora of demands, offering a diverse range of materials such as paper, plastic, and metal to meet the varied packaging requirements of different products. This enables our offerings to stand out in the market.



## Drywall Screw



Bugle Head, Phillips Drive, Coarse/Fine Thread  
Black/Grey Phosphated  
Blue White/Yellow Zinc Plated / Others

## Bugle Head Self Drilling Screw Phillips Drive



Finish: Blue White Zinc Plated  
Black Phosphated  
Ruspert / Others

## Pan Framing Head Self Drilling Screw Phillips Drive



Finish: Black Phosphate  
Blue White Zinc Plated

## Chipboard Screw



Double Flat Head/Flat Head, Pozi/Phillips/Torx Drive

## Hex Flange Head Screw with Spoon Point



Hex Flange Head with Black Rubber  
Silver Ruspert Coating  
Other Coatings

## Hex Flange Head Self Drilling Screw with Black Rubber



Thread: Double Thread, Straight Knurls on Flank  
Finish: Silver Ruspert Coating/Others

## Machine Screw



Head: Pan/ Flat Head  
Finish: Blue White Zinc Plated  
And Others

## Concrete Screw



Flat Head, Phillips Drive  
Blue Ruspert Coating  
Hi-Low with 3 Grooves on Thread  
Nail Point



Hex Washer Head  
"Slotted Drive"  
Blue Ruspert Coating  
Hi-Low with 3 Grooves on Thread  
Nail Point

## Cement Board Screw



Head: Large Wafer Head with Nibs  
Finish: Blue White Zinc Plated /  
Ruspert / Others  
Points: Sharp / Drill / Spoon

## Self Drilling Screw with Wings



Head: Flat Head with 6 Nibs



Large Wafer head with 8 Nibs

## Indent Hex Washer Head Self Drilling Screw



Hexagon / Slot / Phillips Drive  
Finish: Blue White / Yellow Zinc Plated / Ruspert  
Others

## Hex Washer Head Self Drilling Screw with Black Rubber Bonded Steel Washer



## Modified Truss Head Screw 'K-Lath'



Phillips Drive, Drilling / Sharp Point  
Finish: Blue White Zinc Plated / Black Phosphate

## Hex Lag Screw



Finish: Blue White Zinc Plated  
Hot Dipped Galvanised

## Wood Screw



Flat Head Zinc Plated

## Flat Head Self Drilling Screw



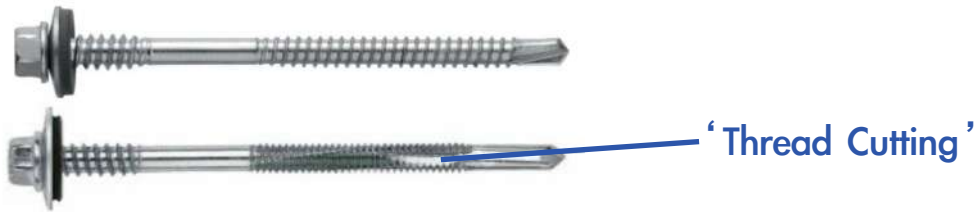
Flat Head  
Phillips Drive  
Finish: Blue White Zinc Plated / Ruspert  
And Others

## Pan Head Self Drilling Screw



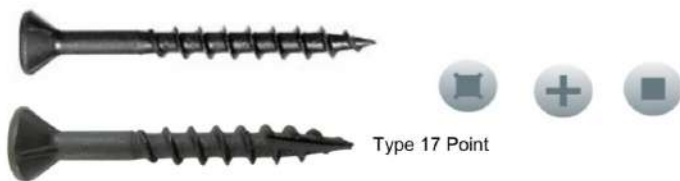
Phillips Drive  
Finish: Blue White Zinc Plated / Ruspert  
And Others

## Sandwich Panel Screw



Indent Hex Washer Head  
Finish: Blue White Zinc Plated / Ruspert  
And Others

## Particle Board Screw



Head: Flat  
Drive: Phillips / Square / Phillips + Square Combination  
Finish: Black Phosphate / Zinc Plated / Ruspert / and Others  
Point: Sharp / Type 17

## “Hinge Screw”



Bright Brass

Antique Brass

Nickle

## Wood Construction Screw

Head: Large Wafer CSK Head / Double Countersunk Head with 6 Nibs

Drive: Torx Drive

Thread: U-Thread

Type 17 Cutting Point

Finish: Zinc Plated / Ruspert / Others



Large Wafer CSK Head



Double CSK Head with 6 Nibs



Hex Washer Head

## Hex Nuts / Hex Finished Nuts

Standards: DIN934 / ISO4032,4033 / UNI5587,5588 / SAE J995  
Grade: 6, 8, 10, Grade 2, 5, 8  
Surface: Plain, Black, Zinc Plated, HDG



## Heavy Hex Nuts

Standards: ASTM A194, A563 / DIN6915  
Grade: 2H, 2HM, DH, Grade 10  
Finish: Black, Zinc Plated, HDG



## Hex Coupling Nuts/Round Coupling Nuts

Standard (Norm): DIN6334  
Grade: 6  
Finish: Plain, Zinc Plated, HDG



## Nylon Insert Lock Nuts

Standard (Norm) : DIN6921  
Grade : 4.8 8.8 10.9 / Grade 2, 5, 8  
Surface : Plain, Black, Zinc Plated, HDG



## Flange Lock Nuts

Standard: DIN6927 / DIN6926  
Grade: 6, 8, 10  
Finish: Zinc Plated



## Hex Flange Nuts

Standards: DIN6923 / ASME B18.2.2

Grade: 6, 8, 10, SAE J995 Standard Grade 2, 5, 8

Size: M2-M60 / #6-2-1/2"

Finish: Plain, Passivation



## Hex High Nuts

Standards: DIN6923 / ASME B18.2.2

Grade: 6, 8, 10, SAE J995 Standards Grade 2, 5, 8

Surface: Plain, Black, Zinc Plated, HDG



## Hex Thin Nuts/Hex Jam Nuts

Standards: DIN439B / DIN936

Grade: 04, 17H, 22H

Surface: Plain, Black, Zinc Plated, HDG



## Square Nuts

Standards: DIN / ASTM / ANSI or According to drawing

Material: Stainless Steel / Carbon Steel / Alloy Steel

Finish: Zinc Plated, Galvanized, HDG, Geomet

Nickel plated, Dacro, Black Oxide

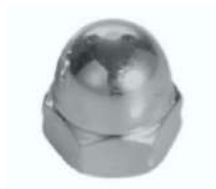


## Hex Cap Dome Nuts

Standard: DIN1587

Grade: 6, 8

Finish: Zinc Plated, HDG



## Slotted Nuts/Castle Nuts

Standard: From DIN / ASTM / ANSI

Material: Stainless steel, carbon steel, Alloy steel

Finish: Polish, Zinc Plated, Galvanised, HDG, Nickel pla



## Wing Nuts

Standards: From DIN / ASTM / ANSI

Grade: A2, A4, 4, 5, 6, 8

Finish: Zinc Plated, Galvanised, HDG, Nickel plated



## Tee Nuts

W/ Prong for Manual Hammering

W/ Prong for Machine Drives

According to Drawing



## Welding Nuts

Standards: DIN928 / DIN 929

Material: Stainless steel / Carbon steel / Alloy steel

Grade: A2, A4, Class 4, Class 8

## Hex Bolt (Full/Partial Thread)

Standards:

(Full) DIN558 / DIN933 / DIN961 / ISO4017

(Partial) DIN601 / DIN931 / DIN960 / ISO4014

Grade : 4.8 5.8 8.8 10.9

Surface : Plain, Black, Zinc Plated, HDG



## Carriage Bolt

Standards (Norm) : DIN603 / ASTM A307

Grade : 4.8 8.8 Gr.A

Surface : Plain, Black, Zinc Plated, HDG

Material: Carbon Steel, Stainless Steel



## Hex Cap Screw/Hex Bolt/Hex Tap Bolt

Standards (Norm) : ASTM A307 / SAE J429

Grade : A, Gr. 2/5/8

Surface : Plain, Black, Zinc Plated, HDG

Material: Carbon Steel, Stainless Steel



## Hex Structural/Heavy Bolt

Standards (Norm):

ASTM A325 / A490 / DIN6914

Grade : Type I, Gr.10.9

Surface : Black, HDG



## Hex Flange Head Bolt

Standard: DIN6921

Grade : 4.8 8.8 10.9 Gr.2 / 5 / 8

Surface : Plain, Black, Zinc Plated, HDG



## Metric T Head Bolts

Standard: DIN7992 / DIN186 / DIN261 / JIS B 1166

Grade: 8.8, 10.9, 12.9

Size: M3-M64

Finish: Black, Zinc, HDG, (Plain)



## U Bolts

Standards:

From DIN / ASTM / ANSI

or According to drawing

Material: Stainless Steel / Carbon Steel

Size: M4-M36



## Hammer Bolt for Solar PV Mount

Standard:

From DIN / ASTM / ANSI / JIS / EN / ISO / AS

Grade: A2-70 A4-70

Size: M8 M10



## Flat Washer

Standards: DIN9021 / DIN125 / DIN125A  
Grade : 100HV, 140HV, 200HV



## Square Washer

Standard: DIN435  
Grade: 100HV, 140HV, 200HV



## Spring Lock Washer

Standards: DIN127 / DIN25201 / DIN6798 / DIN7980  
Grade: 430-530 HV



## Tooth Lock Washer

Standards: DIN6798 (A) (J) (V)



## Bowl Type Washer

Fish Eye Washer Bowl Type Conical Washer

## EPDM Bonded Washer

Flat Washer + EPDM Rubber Washer

## Sleeve Anchor

W/ Hex Flange Nut Type  
W/ Hex Bolt Type  
W/ C-Hook Type  
W/ Eye Type



## Plastic Anchor W/ Screw

Combination or Separated



## Toggle Bolt Anchor Pan Head Screw

According to Drawing



## Drop-In Anchor

Size: M6 - M20





## Stainless Steel Products

Recess:  
Phil, Slot, Torx, Square, Pozi, Inner  
Hex, Hex Washer

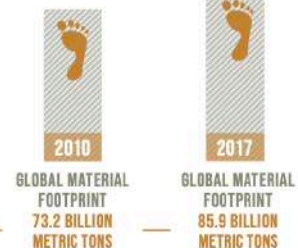
Head:  
Flat, Round, Half Flat, Pan, Hex  
Flange, Rounded Washer, Hex  
Socket, Wafer

We want to make everyday count for contributing to making a part in the sustainable development goals. Lifestyle studies have proven the reduced need to repair, maintain and replace stainless steel fasteners provides lifecycle environmental savings in terms of the reduced use of raw materials, energy and fuel. Not only stainless steel is strong, durable, corrosion resistant, it can be easily recycled to produce more stainless steel.

We are acting now at TM Hardware, we are proud to provide stainless steel fasteners. Please do not hesitate to contact us for further information...

### BEFORE COVID-19

THE WORLD CONTINUES TO  
USE NATURAL RESOURCES  
**UNSUSTAINABLY**



### COVID-19 IMPLICATIONS

THE PANDEMIC OFFERS AN OPPORTUNITY TO  
**DEVELOP RECOVERY PLANS**  
THAT BUILD A MORE SUSTAINABLE FUTURE



FROM 2017 TO 2019,  
79 COUNTRIES AND THE  
EUROPEAN UNION REPORTED  
AT LEAST ONE POLICY TO  
PROMOTE SUSTAINABLE  
CONSUMPTION AND PRODUCTION

Source: United Nations SDG E\_infographics\_12

## Non-Standard Parts

We are proud to provide customisation options of non standard parts allowing us to precisely tailor our products to meet individual requirements. Please do not hesitate to contact us for any further information.

*We offer but are not limited to the following...*

Carbon Steel (including below C1022)

Stainless Steel (SS302, 304, SS316, SS410...)

Aluminium

Copper

Brass

Titanium Alloy



# SUSTAINABLE DEVELOPMENT GOALS

## *We care at TM Hardware...*

We are highly conscious of how sustainability can be crucial to an enterprise's development and management. The Sustainable Development Goals by the United Nations sets the bar for our managerial and business ethics. We believe integrating sustainability into our core strategies is crucial in mitigating risks, fostering innovation and competitiveness, and adapting to evolving regulatory frameworks. In the longer term, this approach guides us in maintaining long-term viability. Learn more about sustainability through visiting our website...

**8** DECENT WORK AND ECONOMIC GROWTH



**9** INDUSTRY, INNOVATION AND INFRASTRUCTURE



**11** SUSTAINABLE CITIES AND COMMUNITIES



**12** RESPONSIBLE CONSUMPTION AND PRODUCTION



With Solar panels, every kilowatt-hour (kWh) of electricity generated by solar panels reduces reliance on fossil fuels like coal, oil, or natural gas, which are the primary sources of carbon dioxide (CO<sub>2</sub>) emissions in the energy sector. In the longer term, this approach guides us in maintaining long-term viability.



# Gallery



Factory: Building 2, No. 16, Xiejiata, Fenghuang Community, Wanghai Street, Haiyan County, Jiaxing City, Zhejiang, PRC  
Phone: +86 17801537132 / +86 18868392286  
Email: [contact@tmfastener.com](mailto:contact@tmfastener.com)

